

Department of Computer Science



Sam Houston State University
Academic Building One

Huntsville, Texas
P.O. Box 2090 • 77341-2090

(936) 294-3846
Fax • (936) 294-4312

COURSE SYLLABUS

DFSC 5310-02 – Principles and Policies of Information Assurance, CRN: 80807
Fall 2017 - August 23rd to December 7th 2017

Location: Online Course - SHSU Distance Education.
Via Blackboard Learning Management System – <http://blackboard.shsu.edu>

Instructor	Office	E-mail	Phone:
Dr. Narasimha Shashidhar	AB1 216B	karpoor@shsu.edu	936-294-1591

Office hours: Online via email and class forums on Blackboard.

Course description: **Welcome to Principles and Policies of Information Assurance!**

This course deals with all facets of Information Assurance policy and program design – including planning, development, deployment, and management. We will learn about the challenges, laws, regulations, and best practices in designing sound policies. These are exciting topics and I am confident that all of you will find it fun and inviting!

Listed below is a quick summary of the topics we will be discussing in this course:

- Establish program objectives, elements, domains, and governance.
- Understand policies, procedures, guidelines, and plans—and the differences among them.
- Write policies in plain language, with the right level of detail.
- Apply the Confidentiality, Integrity & Availability (CIA) security model.
- Use NIST resources and ISO/IEC 27000-series standards.
- Align security with business strategy.
- Define, inventory, and classify information and systems.
- Systematically identify, prioritize, and manage Information Security risks.
- Reduce people-related risks with role-based Security Education, Awareness, and Training.
- Implement effective physical, environmental, communications, and operational security.
- Effectively manage access control.
- Secure the entire system development lifecycle.
- Respond to incidents and ensure continuity of operations.
- Comply with laws and regulations, including GLBA, HIPAA/HITECH, FISMA, PCI-DSS.

Catalog description: An investigation into the development of security planning and policy formation, risk management, security education, training and awareness programs. This course examines physical and electronic approaches to data protection and derives appropriate assessment strategies for determining the assurance quality of target systems. Credit: 3. Prerequisite: None.

Reference book:

Security Program and Policies: Principles and Practices,
Second Edition by Sari Greene.
Publisher: Pearson Certification, March 19, 2014.
Print ISBN-10: 0-7897-5167-4
Print ISBN-13: 978-0-7897-5167-6
Web ISBN-10: 0-13-348118-2
Web ISBN-13: 978-0-13-348118-1
Pages: 648.
Amazon Link: <http://amzn.to/1Jf1QRz>



The reference book, part of a certification series, used to be available via the SHSU library for free, ProQuest Safari Books Online, but not anymore. Perhaps they will add this book back to the collection. Here is the link if you'd like to check: <http://bit.ly/1WO19bd>

You will need to authenticate yourself with your SHSU username and password to access the book.

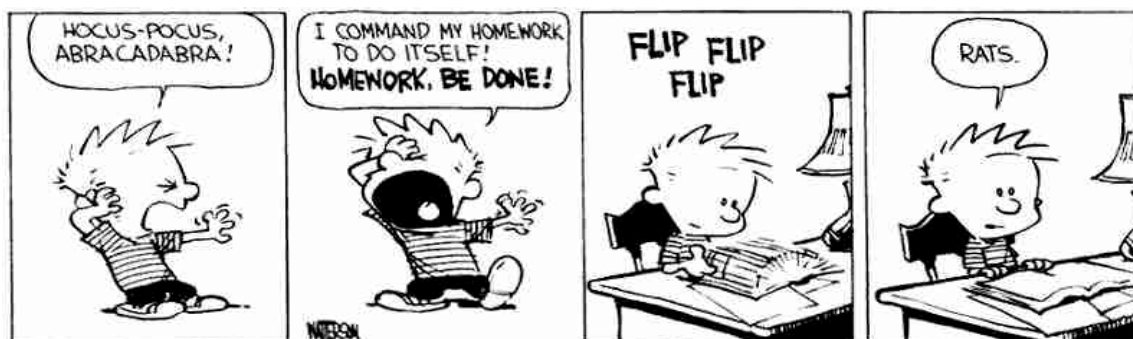
Other Books:

Our SHSU ProQuest Safari Books Library Collection has many more books on Policy and InfoSec Management Online. I strongly recommend you to explore this collection. Here is the link: <http://bit.ly/1JNGO2e>

I strongly recommend that you study a couple of books as part of your academic training in this area. I will post references to these books; online articles, papers etc. during the course of the semester.

Course requirements:

Assignments: Students will be required to complete assignments at the end of each section. I will assign homework as necessary throughout the semester. Homework is an opportunity to demonstrate your knowledge. I expect clear, comprehensive explanations of processes and concepts in typeset homework assignments. All homework must be typeset and must have your name, class and assignment name on the first page. Turn in neat, typeset solutions. In doing homework assignments, you are forbidden from referring to any resources other than your own course notes, the class notes or other material suggested by me. In particular, you are not allowed to consult your friends. You are not allowed to use material from previous years of this course, and you are not allowed to use the Internet for the sole purpose of "finding" solutions.



Research: Students must study and critique/create a summary of at least TWO (2) high quality research articles that complement the class material before the midterm. Students will also engage in research and will produce ONE (1) original research article before the end of the semester. More information on these topics will be made available during the course of the semester.

Exams: There are no exams in this course.

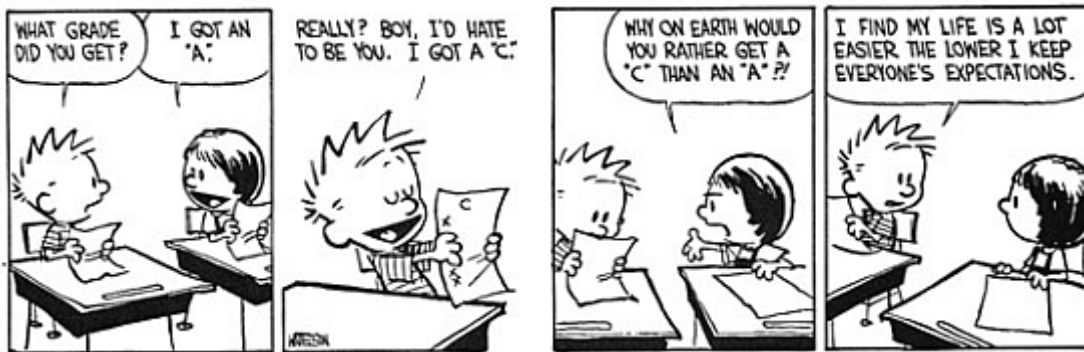
Grading plan:	Assignments	50%	(5 Assignments)
	Summary Article	20%	
	Research Paper	30%	

Grading Criteria:

A Member of The Texas State University System
Sam Houston State University is an Equal Opportunity / Affirmative Action Institution

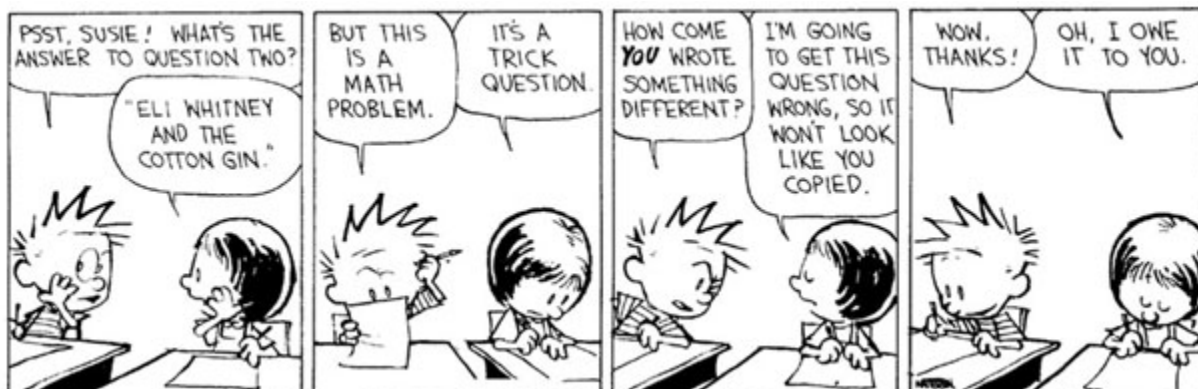
≥ 90	\Rightarrow	A
≥ 80 but < 90	\Rightarrow	B
≥ 70 but < 80	\Rightarrow	C
≥ 60 but < 70	\Rightarrow	D
< 60	\Rightarrow	F

Grade-related questions: It is not possible to provide answers to questions such as the following during the course: “What scores do I have to get for the rest of this class in order to get such and such grade?” “What is the cutoff score for such and such a grade?” “What were the cutoff scores, or what was the grade distribution, in previous years the class was taught?” Late work will not be accepted without a really good justification of the reason for the late work.



Group Work: All assignments and work are individual unless specifically stated otherwise. I will periodically allow work to be completed in groups, but I will specifically indicate which ones. Any violation of this policy will result in a zero on the assignment.

Cheating on homework WILL NOT be tolerated. A grade of “F” for the assignment/course and appropriate disciplinary action will be taken to any student caught cheating.



I warmly welcome you all to this course and guarantee that you will learn much from it and enjoy it thoroughly. My only request is that you are prepared to work hard and enjoy the process!

Email: Email is naturally the best way to communicate with me. Please understand that I will not respond to Email that does not follow appropriate etiquette. At a minimum, your email must include your name, and specifics of your question. It must not include common IRC chat lingo or shorthand. If your email does not conform to the above mentioned minimum requirements, then your email will not be answered. I will try to respond to your emails promptly.

Course Summary:

My plan for the course is to study a diverse collection of articles, papers and reference materials to develop a deep understanding of the subject matter. After studying these materials, you should have a reasonable background and knowledge which permits you to further your training in this area. To this end, our course only serves as an introductory/overview course on this topic.

Blackboard will be the only source of all course related material including homework problem sets and additional notes. Please familiarize yourselves with the course environment. While I will try to provide all the prerequisite foundations materials required for the course, students are expected to possess a certain level of computing maturity and the desire to learn new concepts and naturally willing to work hard in this process to succeed in the course.

Additional goals supported by this course include: a) developing a strong technical foundation in the computational/information security sciences, b) an understanding and sensitivity for security and professional ethics, c) appreciation for the need to pursue professional and related learning activities for life. Students are expected to: a) employ critical thinking in seeking optimal problem solutions, b) maintain and increase their professional knowledge/skill sets, c) develop their ability to express their skills using tools and related analysis techniques and d) to extend the discipline through original cognitive processes..

Tentative Course Outline: (Subject to changes as the semester progresses) (Sunday is the end of a week)

Week #	Lesson Title	Assigned Readings and Assignments
1 and 2 08/23-09/03	Welcome and Introduction to DFSC 5310 Getting Oriented with Blackboard Assigned Reading Material	Assignment 1 Due on 09/03
3 and 4 09/04-09/17	Assigned Reading Material	Assignment 2 Due on 09/17
5 and 6 09/18-10/01	Assigned Reading Material	Assignment 3 Due on 10/01
7 and 8 10/02-10/15	Assigned Reading Material	Assignment 4 Due on 10/15
9 and 10 10/16-10/29	Assigned Reading Material Begin Work - Research Paper Summary/Critique	Assignment 5 Due on 10/29 Research Topic Due on 10/29
11 and 12 10/30-11/12	Begin Work - Research Paper	Paper Summary Due on 11/12
13 and 14 11/13-11/26	Work on Research Paper	Preliminary Draft due 11/26
15 and 16 11/27-12/07	Wrap Up: Complete Research Paper and Submit	Due: Last Class day, 12/07

Note: Your research articles summary and research paper do not have to be independent activities. You are welcome to extend your articles summary to a project and then extend that to a research paper.

Instructional Methods

This course is designed to promote learner-centered activities and support the development of cognitive strategies and competencies necessary for effective task performance and critical problem solving. The course utilizes individual and some group learning activities, performance-driven assignments, problem-based cases, projects, and discussions. These methods focus on building engaging learning experiences conducive to development of critical knowledge and skills that can be effectively applied in professional contexts.

Suggested Learning Approach

In this course, you will be studying individually and within a group of your peers. As you work on the course deliverables, you are encouraged to share ideas with your peers and instructor, work collaboratively on projects and team assignments, raise critical questions, and provide constructive feedback. You are encouraged to actively participate in the discussion forums on Blackboard in an effort to learn from your classmates. I will periodically monitor these discussion forums and offer comments to facilitate discussions. This serves to enrich the “virtual” classroom and make the material more exciting, inviting and above all fun!

Use the following advice to receive maximum learning benefits from your participation in this course:

DO	DON'T
<ul style="list-style-type: none"> ▪ Do take a proactive learning approach ▪ Do share your thoughts on critical issues and potential problem solutions ▪ Do plan your course work in advance ▪ Do explore a variety of learning resources in addition to the textbook ▪ Do offer relevant examples from your experience ▪ Do make an effort to understand different points of view ▪ Do connect concepts explored in this course to real-life professional situations and your own experiences 	<ul style="list-style-type: none"> ▪ Don't assume there is only one correct answer to a question ▪ Don't be afraid to share your perspective on the issues analyzed in the course ▪ Don't be negative towards the points of view that are different from yours ▪ Don't underestimate the impact of collaboration on your learning ▪ Don't limit your course experience to merely reading the textbook ▪ Don't postpone your work on the course deliverables – work on small assignment components every day

Class participation

In accordance with University Policy (<http://www.shsu.edu/students/guide/polpro/attendance.html>), regular attendance is required; however, no points will be awarded or subtracted based on your attendance. You are responsible for all material covered in every class, regardless of whether you attended or not. It is your responsibility to obtain notes, assignments, etc., from fellow class members if you miss a class.

Academic dishonesty

All students are expected to engage in all academic pursuits in a manner that is above reproach. Students are expected to maintain complete honesty and integrity in the academic experiences both in and out of the classroom. Any student found guilty of dishonesty in any phase of academic work will be subject to disciplinary action. The university and its official representatives may initiate disciplinary proceedings against a student accused of any form of academic dishonesty including, but not limited to, cheating on an examination or other academic work which is to be submitted, plagiarism, collusion and the abuse of resource materials. No cheating on an examination or assignments is allowed. A score of zero will be given to the student if such a case occurred.

Rules of conduct

Students will refrain from behavior in the classroom that intentionally or unintentionally disrupts the learning process and, thus, impedes the mission of the university. Please turn off or mute your cellular phone and/or pager before class begins. Students are prohibited from eating in class, using tobacco products, making offensive remarks, reading newspapers, sleeping, talking among each other at inappropriate times, wearing inappropriate clothing, or engaging in any other form of distraction. Inappropriate behavior in the classroom shall result in a, minimally, a directive to leave class or being reported to the Dean of Students for disciplinary action in accordance with university policy.

Americans with Disabilities Act

According to University policy requests for accommodations must be initiated by the student. A student seeking accommodations should go to the Counseling Center and Services for Students with Disabilities (SSD) for instructions.

Students With Disabilities Policy

It is the policy of Sam Houston State University that individuals otherwise qualified shall not be excluded, solely by reason of their disability, from participation in any academic program of the university. Further, they shall not be denied the benefits of these programs nor shall they be subjected to discrimination. Students with disabilities that might affect their academic performance should register with the Office of Services for Students with Disabilities located in the Lee Drain Annex (telephone 936-294-3512, TDD 936-294-3786, and e-mail disability@shsu.edu). They should then make arrangements with their individual instructors so that appropriate strategies can be considered and helpful procedures can be developed to ensure that participation and achievement opportunities are not impaired.

SHSU adheres to all applicable federal, state, and local laws, regulations, and guidelines with respect to providing reasonable accommodations for students with disabilities. If you have a disability that may affect adversely your work in this class, then I encourage you to register with the SHSU Services for Students with Disabilities and to talk with me about how I can best help you. All disclosures of disabilities will be kept strictly confidential. NOTE: No accommodation can be made until you register with the Services for Students with Disabilities. For a complete listing of the university policy, see: <http://www.shsu.edu/dept/academic-affairs/documents/aps/students/811006.pdf>

Religious Holidays

An institution of higher education shall excuse a student from attending classes or other required activities, including examinations, for the observance of a religious holy day, including travel for that purpose. A student whose absence is excused under this subsection may not be penalized for that absence and shall be allowed to take an examination or complete an assignment from which the student is excused within a reasonable time after the absence.