

COURSE SYLLABUS

BIOLOGY 2440, SECTIONS 15 & 16

HONORS INTRODUCTORY CELL BIOLOGY

4 CREDIT HOURS, WRITING ENHANCED

FALL 2017

LECTURE: 9:00-9:50, MWF, EVANS 320

LABORATORY: 2:00-3:50 M (SECTION 16), LDB 207

*THE CELL IS THE MOST ELEMENTARY AND FOUNDATIONAL
UNIT OF LIFE; THUS, THE GOAL OF CELL BIOLOGY IS TO
UNDERSTAND THE ESSENCE OF LIFE.*

INSTRUCTOR

DR. TODD P PRIMM

DEPARTMENT OF BIOLOGICAL SCIENCES

OFFICE: LDB 127, AND CHSS C002

OFFICE PHONE: (936) 294-2689

E-MAIL: tprimm@sam.edu

OFFICE HOURS: BY EMAIL APPOINTMENT

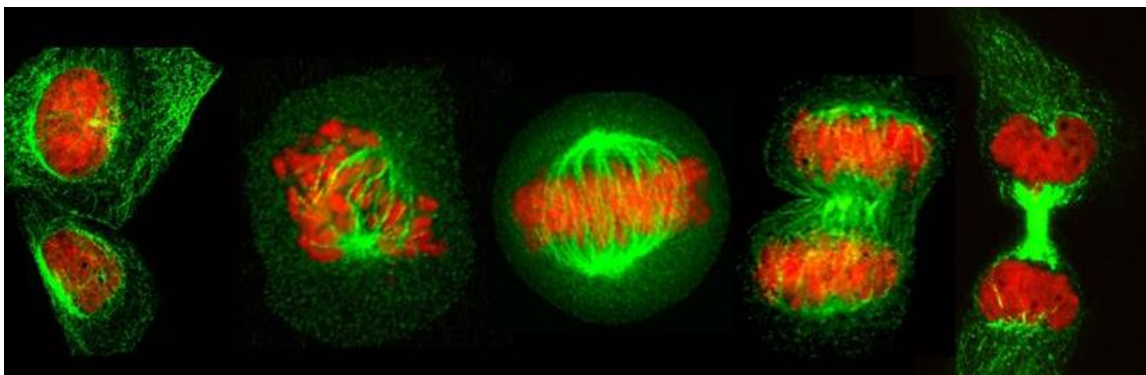
TEACHING ASSISTANT

MRS ELIANA STETCO

EMAIL: exs076@shsu.edu

COURSE DESCRIPTION

The course will focus on a general cellular approach to biological principles including scientific methods, biochemistry, cell structure, metabolism, the central dogma, and cell division. This section is Honors and Writing Enhanced.



PREREQUISITES

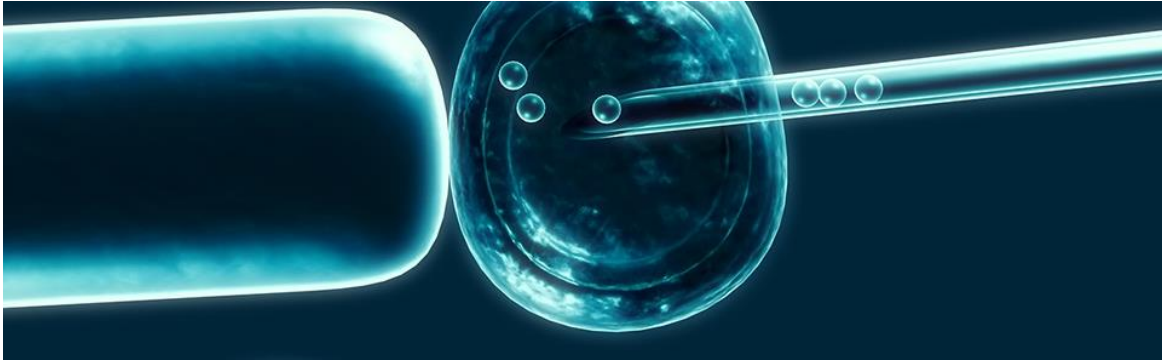
A GRADE OF “C” OR BETTER IN BIOL 1411 (PREVIOUSLY 1311/1111), BIOL 1413 (1313/1113), & CHEM 1411 (1311/1111).

APPROVAL BY THE HONORS COLLEGE.

This course follows Botany and Zoology, and is the third course in the Biology major and minor, and in the Biomedical Science major.

METHODS OF INSTRUCTION

This course will not be based on traditional lectures, instead on student reading of the textbook for background material, and then primarily learning activities during class time. The reason for this is that research on student learning demonstrates that active learning is more effective, and persists longer in the learner. This enhanced memory is critical the content in this course is essential for you to build upon in Genetics, Microbiology, and many other upper-division courses. Second, this approach will help develop higher thinking skills. Finally, the course will be more enjoyable. In addition to the learning activities, take-home projects will also be utilized to enhance student understanding by processing of the material and concepts. Students will keep an online learning journal to reflect on learning across the course and how scientific course content has impacts in the “real world” (including topics such as vaccine controversy, diet fads, medical scams, pseudoscience, etc). Resources for students, including animations, videos, etc, will be posted regularly on Blackboard. The Blackboard page will also contain a full class schedule, updated daily. Laboratory sessions are not a standard experimental lab, but instead recitations that will consist of problem sets, exercises, and group activities designed to expand upon lecture material. Recitation information will also be on the Blackboard page.



WRITING ENHANCED

This course is Writing Enhanced as well as Honors, which means that writing is used significantly in the course as a learning tool. It will count as a W course in your major or minor towards your SHSU graduation requirement. Writing will be used both as a process and a product, to promote critical thinking skills and effective communication skills, which are highly desired and expected in college graduates.

COURSE OBJECTIVES

Students in the course will:

- ACQUIRE A FACTUAL KNOWLEDGE BASE OF CELL BIOLOGY TERMS AND METHODS
- LEARN FUNDAMENTAL PRINCIPLES AND THEORIES OF CELL BIOLOGY
- DISCUSS WHY CELL BIOLOGY IS USEFUL AND INTERESTING

REQUIRED MATERIALS

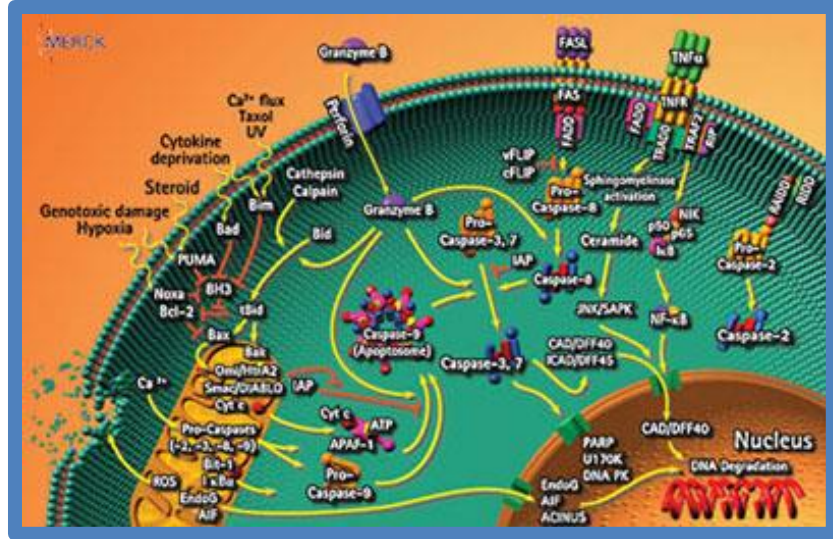
TEXTBOOK: ALBERTS & 7 OTHER AUTHORS. *ESSENTIAL CELL BIOLOGY*.
FOURTH EDITION. FROM GARLAND SCIENCE. ON-CAMPUS BOOKSTORE SHOULD HAVE THE
LOOSELEAF VERSION. YOU CAN GET THE HARDBACK IF YOU PREFER. I DO NOT RECOMMEND
PREVIOUS EDITIONS.

ISBN: 978-0-8153-4525-1

YOU CAN ORDER PRINT OR EBOOKS FROM garlandscience.com/ecb4

ATTENDANCE POLICY

REGULAR AND PUNCTUAL ATTENDANCE AND PARTICIPATION IS EXPECTED FOR LECTURE AND
RECITATION MEETINGS.



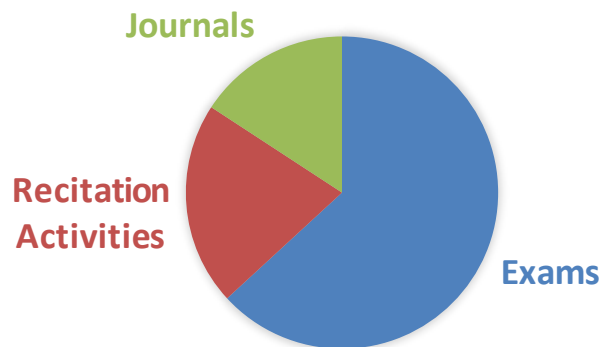
METHODS OF EVALUATION

STUDENTS WILL BE EVALUATED ACCORDING TO THE FOLLOWING:

LECTURE EXAMS	FOUR AT 150 PTS. EACH	600 PTS.
RECITATION ACTIVITIES		200 PTS.
LEARNING JOURNAL		150 PTS.
COMPREHENSIVE FINAL EXAM (OPTIONAL)		150 PTS (SPECIAL)

TOTAL		950 PTS.

COURSE GRADE



EXTRA CREDIT IS AVAILABLE AND BUILT INTO THE SYSTEM. EXCELLENT JOURNAL ENTRIES CAN EARN EXTRA CREDIT. THERE IS NO OTHER EXTRA CREDIT IN THE COURSE.

COURSE GRADES WILL BE DETERMINED BY THE PERCENTAGE OF TOTAL POINTS THE STUDENT HAS EARNED, ACCORDING TO THE FOLLOWING STANDARD GRADING SCALE:

90-100%	A	60-70%	D
80-90%	B	< 60%	F
70-80%	C		

NOTE THAT A COURSE GRADE OF A OR B IS REQUIRED TO EARN HONORS CREDIT. STUDENTS ARE REQUIRED TO TAKE EXAMINATIONS AT THE SCHEDULED TIMES. MAKE-UP EXAMS WILL BE ALLOWED ONLY IN THE CASES OF EXTREME ILLNESS, DANGEROUS WEATHER CONDITIONS, FAMILY EMERGENCY, OR PARTICIPATION IN A UNIVERSITY-SPONSORED EVENT. STUDENTS MUST NOTIFY THE INSTRUCTOR IN ADVANCE OF A MISSED EXAM TO ARRANGE FOR A MAKE-UP EXAM. I RESERVE THE RIGHT TO GIVE ESSAY FORMAT MAKE-UP EXAMS. STUDENTS MAYBE ASKED TO PROVIDE DOCUMENTATION SUPPORTING THE REASON FOR THE ABSENCE. **THE FINAL EXAM IS OPTIONAL, AND IF TAKEN, WILL REPLACE THE LOWEST OF YOUR LECTURE EXAM GRADES.**

EXAM SCORES WILL BE POSTED ON BLACKBOARD AS SOON AS THE SCORES ARE AVAILABLE. STUDENTS MAY CHECK THEIR PROGRESS IN THE COURSE AT ANY TIME THROUGH THE BLACKBOARD COURSE WEBSITE.

IF A STUDENT BELIEVES THAT AN EXAM HAS BEEN GRADED IN ERROR, OR THAT AN EXAM SCORE HAS BEEN POSTED INCORRECTLY, THE STUDENT SHOULD CONTACT THE INSTRUCTOR IMMEDIATELY TO DETERMINE IF AN ERROR HAS BEEN MADE. ALL DECISIONS REGARDING THE CHANGE OF AN EXAM SCORE WILL BE MADE BY THE INSTRUCTOR AND ARE FINAL; HOWEVER, THE INSTRUCTOR WILL PROVIDE THE STUDENT WITH A RATIONALE FOR THE DECISION.

ALL ASSIGNMENTS MUST BE TURNED IN BY THE DUE DATE. LATE ASSIGNMENTS WILL NOT BE ACCEPTED.

UNIVERSITY POLICIES

FOR UNIVERSITY POLICIES REGARDING ACADEMIC DISHONESTY, STUDENT ABSENCES ON RELIGIOUS HOLY DAYS, STUDENTS WITH DISABILITIES, AND VISITORS IN THE CLASSROOM, PLEASE SEE THE FOLLOWING WEBSITE: [HTTP://WWW.SHSU.EDU/SYLLABUS/](http://www.shsu.edu/syllabus/)

