

DANC 1372-03

ONLINE SECTION



CONTACT INFORMATION

Jessica Ray Herzogenrath, PhD

jrh094@shsu.edu

Student Hours
11-12 T - ABIV 412
11-12 Th - GPAC 151E

DANCE AS ART



What is Dance? What is Art?

This course explores dance as an art form and how conceptualizations of “dance” and “art” affect the situation of dance in relationship with other art forms and in society at large. Through lecture, reading, watching, writing, and creative activities, each week we address a different question about dance as art, including who dances, where dance happens, how we dance, and why we dance.

Thinking, writing and talking about dance shapes your experience as a performer and/or audience member.

How to Succeed in Dance as Art

Through our Discussion Boards and Journal Entries, demonstrate engagement with both the material presented and your classmates. If you have questions, please ask (for general questions, use my Virtual Office; for other concerns, email me)! Submit assignments on time and use them as chances to sharpen your analysis and writing abilities. I also ask that each of us displays respect for all opinions and perspectives.

Remember that this is YOUR class, and its success rests in large part on your participation and effort. Think of me as your guide in a contact improv of ideas.

Grades and Grading

Grades

Grades will be determined by the number of points earned.

The scale follows:

A	900 - 1000
B	800 - 899
C	700 - 799
D	600 - 699
F	599 and Lower

Note for Dance Majors and Minors: In order for this course to count towards the dance major or minor, you must pass with a grade of C (i.e.: earn 700 points). If you fail the course, you will be ineligible for casting for Fall 2018 Dance Spectrum.

Grading

I will complete grading of on-time submissions within two weeks. I always aim to finish more quickly, and I will also let you know of any delay.

Activities

You earn points toward your final grade in the following ways:

Start Here Module

30 points

Let's start at the very beginning, because it's a very good place to start. Honestly, this is an easy 30 points to kick off the semester; read the materials and complete the Start Here Forum to get the ball rolling (insert additional extraneous beginning something analogy here).

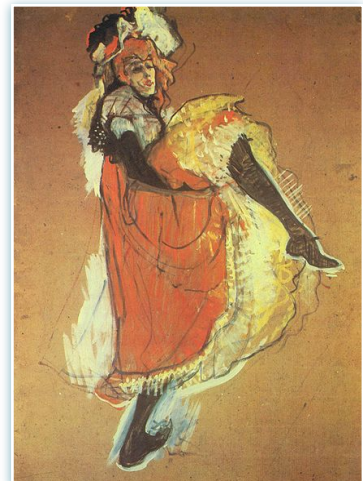
Live Performance Writing Response

75 points

Minimum 1000 words; maximum 1500

Attend and write a response to a live performance (please ask if you have a question about what qualifies as a performance).

Responses should include description and analysis. In addition to submission of your writing on Blackboard, you will need to verify



your attendance via the class Slack group. Please see the link on Blackboard called "Live Performance Writing Response Opportunities" for performance options in Huntsville, Houston, and Austin (please contact me if you need assistance identifying performances in another area).

Due Sunday May 6 by 11:59 PM CST

Discussion Forums

350 points = 14 @ 25 points each

Each Initial Post should be no shorter than 50 words and demonstrate engagement with the given prompt. For Replies, you will respond weekly to at least two other students. Replies must be in sentence form and go beyond "I agree" or "I disagree". Engage with each other! Give reasons and supporting evidence! Ask questions!

Due weekly: Initial Post Wednesday by 11:59 PM CST; Replies Friday by 11:59 PM CST

Journal Entries

420 points = 14 @ 30 points each

Each Journal Entry should be no fewer than 300 words and show engagement with the reading.

Due weekly on Sunday by 11:59 PM CST

Final/e Writing

125 points

Open Monday May 7 at 12:01 AM; due Thursday May 10 by 11:59 PM CST

Activities Access

Because we will cover a wide variety of topics, readings will be made available through either Blackboard, or the course blog. **Late Journal Entries and Discussion Board Initial Posts and Replies will receive a 5-point deduction. Late Live Performance Writing Responses will receive a 10-point deduction. All Activities (besides the Final/e) must be submitted before 11:59 PM CST on Sunday May 6 in order to be graded.**

Course Schedule

Module	Dates (Mon-Sun)	Topic	Activities All Due Dates at 11:59 PM CST
Start Here	Wednesday January 17- Sunday January 21		Start Here Forum: Initial Post: Friday January 19 Replies: Sunday January 21
Module 1	Monday January 22- Sunday January 28	Introductions and Dance in Art	Discussion Forum 1: Initial Post: Wednesday January 24 Replies: Friday January 26 Journal Entry 1: Sunday January 28
Module 2	Monday January 29- Sunday February 4	What is Dance? What is Art?	Discussion Forum 2: Initial Post: Wednesday January 31 Replies: Friday February 2 Journal Entry 2: Sunday February 4

Module 3	Monday February 5- Sunday February 11	What is Dance? — “Authenticity” and Dance in the United States	Discussion Forum 3: Initial Post: Wednesday February 7 Replies: Friday February 9 Journal Entry 3: Sunday February 11
Module 4	Monday February 12- Sunday February 18	What is Dance? — “Authenticity” and Dance in India	Discussion Forum 4: Initial Post: Wednesday February 12 Replies: Friday February 16 Journal Entry 4: Sunday February 18
Module 5	Monday February 19- Sunday February 25	Who Dances? — Race and Ethnicity	Discussion Forum 5: Initial Post: Wednesday February 21 Replies: Friday February 23 Journal Entry 5: Sunday February 25
Module 6	Monday February 26- Sunday March 4	Who Dances? — Gender and Gender Identity	Discussion Forum 6: Initial Post: Wednesday February 28 Replies: Friday March 2 Journal Entry 6: Sunday March 4
Module 7	Monday March 5- Sunday March 11	Who Dances? — Age and Aging	Discussion Forum 7: Initial Post: Wednesday March 7 Replies: Friday March 9 Journal Entry 7: Sunday March 11
	Monday March 12- Sunday March 18 SPRING BREAK!!!		
Module 8	Monday March 19- Sunday March 25	Who Dances? — Ability	Discussion Forum 8: Initial Post: Wednesday March 21 Replies: Friday March 23 Journal Entry 8: Sunday March 25
Module 9	Monday March 26- Sunday April 1	Who Watches Dance? — The Critics	Discussion Forum 9: Initial Post: Wednesday March 28 Replies: Friday March 30 Journal Entry 9: Sunday April 1
Module 10	Monday April 2-Sunday April 8	Where Does Dance Happen? — The Screen	Discussion Forum 10: Initial Post: Wednesday April 4 Replies: Friday April 6 Journal Entry 10: Sunday April 8
Module 11	Monday April 9-Sunday April 15	Where Does Dance Happen? — Site-Specific Work	Discussion Forum 11: Initial Post: Wednesday April 11 Replies: Friday April 13 Journal Entry 11: Sunday April 15

Module 12	Monday April 16- Sunday April 22	How Does Dance Happen? — Technology	Discussion Forum 12: Initial Post: Wednesday April 18 Replies: Friday April 20 Journal Entry 12: Sunday April 22
Module 13	Monday April 23- Sunday April 29	How Does Dance Happen? — Competitions	Discussion Forum 13: Initial Post: Wednesday April 25 Replies: Friday April 27 Journal Entry 13: Sunday April 29
Module 14	Monday April 30- Sunday May 6	Why Do We Dance? — Dance as Labor and Love	Discussion Forum 14: Initial Post: Wednesday May 2 Replies: Friday May 4 Journal Entry 14: Sunday May 6
Module 15	Monday May 7- Thursday May 10	Final/e	Final/e Writing: Open Monday May 7, 12:01am-Thursday May 10, 11:59pm

Communication and Expectations

The Syllabus

Note that this syllabus is one of your course materials, the contract between me and you. Contact me if you have any questions about the syllabus because it is imperative that you understand it.

I will not do for one student what I cannot do for all students. This means that I will not ever offer individual extra credit of any kind. In my experience, adding more work does not solve the problem of a suffering grade. I encourage you to touch base with me sooner rather than later if you have questions or concerns. I will not grade on a curve. Post your favorite dance video on our Slack account channel #morefunstufffromyou before the close of the Start Here Module on January 22, 2018, to earn 5 bonus points.

Learning Outcomes

Over the duration of this course students may:

- . Improve their ability to think and write about dance
- . Improve their ability to articulate opinions about dance as an art
- . Sharpen their observation and movement analysis skills

Communication

I see it as my job to facilitate your success as a student. As such, I will happily respond to email appropriately addressed (in other words, including a salutation, clearly stated question or concern, and closing with your name) within 24 hours, except on weekends and school holidays. Also, I encourage you to direct general questions (in other words, those that may be of interest to other students, including questions about the syllabus or assignments) to my Virtual Office on Blackboard.

On Civil Discourse

Online courses provide unprecedented access and availability for a variety of students - this is part of what can make online learning so wonderful. However, as you likely already know, online-based learning also offers the cover of anonymity, which can lead to unproductive discourse. I encourage debate and disagreement but not name-calling, personal attacks, or slurs of any kind. Anyone engaging in this type of behavior will risk losing points for that week. Continued instances of this type of behavior will warrant further disciplinary action.

Campus Resources

READING AND WRITING CENTER

Visit the Reading and Writing Center with any questions or concerns about improving your writing skills.

SAM CENTER

Visit the SAM Center with any questions concerning academic advising and/or mentoring.

SHSU Policies

ACADEMIC DISHONESTY:

All students are expected to engage in all academic pursuits in a manner that is above reproach. Students are expected to maintain honesty and integrity in the academic experiences both in and out of the classroom. Any student found guilty of dishonesty in any phase of academic work will be subject to disciplinary action. The University and its official representatives may initiate disciplinary proceedings against a student accused of any form of academic dishonesty including but not limited to, cheating on an examination or other academic work which is to be submitted, plagiarism, collusion and the abuse of resource materials. For a complete listing of the university policy, see: the office of the [Dean of Students](#).

ONLINE ATTENDANCE AND PARTICIPATION:

Though clearly different from face-to-face classes, attendance for online courses is still measured. Of particular note: merely logging in does not constitute "attendance." In order to be counted as "present," you will need to complete the assignments consistently for the duration of the semester. You may view the Sam Houston State policy in full via the [SHSU Online Campus](#).

STUDENTS WITH DISABILITIES POLICY:

It is the policy of Sam Houston State University that individuals otherwise qualified shall not be excluded, solely by reason of their disability, from participation in any academic program of the university. Further, they shall not be denied the benefits of these programs nor shall they be subjected to discrimination. Students with disabilities that might affect their academic performance should register with the Office of Services for Students with Disabilities located in the Lee Drain Annex (telephone 936-294-3512, TDD 936-294-3786, and e-mail disability@shsu.edu). They should then make arrangements with their individual instructors so that appropriate strategies can be considered and helpful procedures can be developed to ensure that participation and achievement opportunities are not impaired.

SHSU adheres to all applicable federal, state, and local laws, regulations, and guidelines with respect to providing reasonable accommodations for students with disabilities. If you have a disability that may affect adversely your work in this class, then I encourage you to register with the SHSU Services for Students with Disabilities and to talk with me about how I can best help you. All disclosures of disabilities will be kept strictly confidential. NOTE: No accommodation can be made until you register with the Services for Students with Disabilities. See the full policy in the following [Academic Policy Statement](#).

VISITORS IN THE CLASSROOM:

Only registered students may attend class. Exceptions can be made on a case-by-case basis by the professor. In all cases, visitors must not present a disruption to the class by their attendance. Students wishing to audit a class must apply to do so through the Registrar's Office.