

DEAN OF STUDENTS' OFFICE

HOME / DEPARTMENTS / DEAN OF STUDENTS' OFFICE

Select Language

Powered by [Google Translate](#)

PURPOSE

The Dean of Students' Office provides premier student and family support services and programs with a focus on student success, access, engagement, and retention. Through restorative practices, our department provides holistic student support, as well as opportunities for leadership, development, and community engagement. Our parent programs support parents, families, and supporters of students by building community, parent connection, and providing scholarship opportunities.

STUDENT ACCESS & COMMUNITY STANDARDS



[Student Code of Conduct & Incident Report Form](#)



[University Policies](#)



[Behavioral Intervention](#)



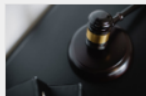
[Hazing Notice & Training](#)



[Student Grievances](#)



[Absence Notification](#)



[Student Legal & Mediation Services](#)



[Expressive Activity](#)

Dean of Students' Office

[Home](#)

Student Access & Community Standards

[Student Code of Conduct](#)

[Incident Report Form](#)

[University Policies](#)

[Behavioral Intervention Form](#)

[Hazing Notice & Training](#)

[Student Grievances](#)

[Absence Notification](#)

[Student Legal & Mediation Services](#)

Student Engagement

[Freshmen Leadership Program](#)

[Orange Keys](#)

[Student Government Association](#)

[Fraternity & Sorority Life](#)

[Keys of Excellence](#)

[Raven's Call](#)

[Leadership Initiatives](#)

[Expressive Activity](#)

[Campus Activities & Traditions](#)

Parent & Family Relations

[SHSU Parents' Association](#)

[Bearkat Family Weekend](#)

[Parent Engagement Platform](#)

[Additional Parent & Family Resources](#)

STUDENT ENGAGEMENT



[Freshmen Leadership Program](#)



[Orange Keys](#)



[Student Government Association](#)



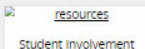
[Fraternity & Sorority Life](#)



[Keys of Excellence](#)



[Raven's Call](#)



[resources](#)
[Student Involvement](#)

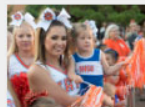


[Campus Activities & Traditions](#)

PARENT & FAMILY RELATIONS



[SHSU Parents' Association](#)



[Bearkat Family Weekend](#)



[Parent Engagement Platform](#)



[Additional Parent & Family Resources](#)

CONTACT US

✉ doso@shsu.edu

☎ 936-294-1785

[Organizational Chart](#)

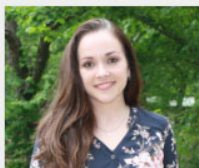


Chelsea Smith, EdD

Assistant Vice President for Student Affairs & Dean of Students

cksmith@shsu.edu

936-294-1785



Teresa Bird

Assistant to the AVP & Dean of Students

tbird22@shsu.edu

936-294-3194



Gene Roberts, EdD, JD

Associate Dean of Students; Student Access & Community Standards Director; Student Legal & Mediation Services

gene.roberts@shsu.edu



Rachel Valle, EdD

Executive Director, Student Engagement

rachel.valle@shsu.edu

936-294-3000