

DEAN OF STUDENTS' OFFICE

HOME / DEPARTMENTS / DEAN OF STUDENTS' OFFICE

PURPOSE

The Dean of Students' Office provides premier student and family support services and programs with a focus on student success, access, engagement, and retention. Through restorative practices, our department provides holistic student support, as well as opportunities for leadership, development, and community engagement. Our parent programs support parents, families, and supporters of students by building community, parent connection, and providing scholarship opportunities.

STUDENT ACCESS & COMMUNITY STANDARDS



[Student Code of Conduct & Incident Report Form](#)



[University Policies](#)



[Behavioral Intervention](#)



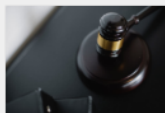
[Hazing Notice & Training](#)



[Student Grievances](#)



[Absence Notification](#)



[Student Legal & Mediation Services](#)



[Expressive Activity](#)

STUDENT ENGAGEMENT



[Freshmen Leadership Program](#)



[Orange Keys](#)



[Student Government Association](#)



[Fraternity & Sorority Life](#)

Dean of Students' Office

Home

Student Access & Community Standards

[Student Code of Conduct](#)

[Incident Report Form](#)

[University Policies](#)

[Behavioral Intervention Form](#)

[Hazing Notice & Training](#)

[Student Grievances](#)

[Absence Notification](#)

[Student Legal & Mediation Services](#)

Student Engagement

[Freshmen Leadership Program](#)

[Orange Keys](#)

[Student Government Association](#)

[Fraternity & Sorority Life](#)

[Keys of Excellence](#)

[Raven's Call](#)

[Leadership Initiatives](#)

[Expressive Activity](#)

[Campus Activities & Traditions](#)

Parent & Family Relations

[SHSU Parents' Association](#)

[Bearkat Family Weekend](#)

[Parent Engagement Platform](#)

[Additional Parent & Family Resources](#)



[Keys of Excellence](#)



[Raven's Call](#)



[resources](#)

[Student Involvement](#)

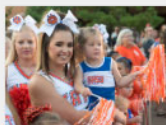


[Campus Activities & Traditions](#)

PARENT & FAMILY RELATIONS



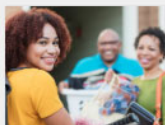
[SHSU Parents' Association](#)



[Bearkat Family Weekend](#)




[Parent Engagement Platform](#)



[Additional Parent & Family Resources](#)

CONTACT US

 doso@shsu.edu

 936-294-1785

[Organizational Chart](#)

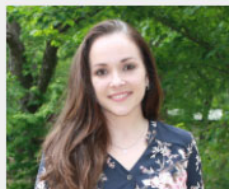


Chelsea Smith, EdD

Assistant Vice President for Student Affairs & Dean of Students

cksmith@shsu.edu

936-294-1785



Teresa Bird

Assistant to the AVP & Dean of Students

tlb022@shsu.edu

936-294-3194



Gene Roberts, EdD, JD
*Associate Dean of Students,
Student Access & Community
Standards*
*Director, Student Legal &
Mediation Services*
gene.roberts@shsu.edu
936-294-1717



Rachel Valle, EdD
*Executive Director, Student
Engagement*
rachel.valle@shsu.edu
936-294-3000



**Sam Houston
State University**



Huntsville, Texas 77341
936.294.1111 | (866) BEARKAT

Contacts

University Contacts
Personnel & Department Search
Contact the Web Editor
Office of the President
Administration
Faculty & Staff
State of Texas
Employment
Mental Health Counseling

More SHSU

Accreditations
Policies
Web Privacy and Site Link Statement
Web Site Accessibility
Open Records
KatSafe - Emergency Management
Texas Homeland Security
Texas Veterans Portal
TRAIL

Fraud Reporting Hotline
Title IX (Sexual Misconduct)
Annual Security & Fire Report (Clery Act)
State Auditor's Office Hotline
Online Institutional Resumes
Governor's Committee on People with Disabilities
Where the Money Goes
Texas CREWS
Public Access to Course Information
CARES

